



POWER TO LIFT

HMF 910K-RCS

The HMF 910K-RCS is a reliable and sturdy crane with high lifting capacity and full speed in the entire working area.



A fast crane with an excellent lifting capacity

The HMF 910K-RCS is a radio remote controlled crane, which works with full speed in the entire working area. It is a versatile crane which can be used for a wide range of different tasks.

The crane is designed in a compact way, which offers good utilisation of the truck body and ultimately means lower cost of ownership.

The crane is equipped with a 15° over-bending which ensures maximum lifting capacity in the entire working area.

Main benefits

- Wear-resistant
- High lift-to-weight ratio
- Radio remote control system for total freedom

PERFORMANCE	910-K1	910-K2	910-K3	910-K4
Load Moment (tm)	8	7,7	7,6	7,3
Hydraulic reach (m)	5,3	7,3	9,1	11
Weight excl. stabilizers (Kg)	665	740	810	870
Weight of stabilizers, standard (Kg)	115	115	115	115
Lift-to-weight ratio	10,2	9	8,2	7,4
Slewing Angle (°)	400	400	400	400
Slewing torque (kgm)	840	840	840	840
Working pressure (bar)	335	335	335	335
GEOMETRY				
Height above mounting surface (mm)	1910	1910	1910	1910
Width, folded, standard (mm)	2220	2220	2220	2220
Length of crane, no extra valves (mm)	664	664	664	664

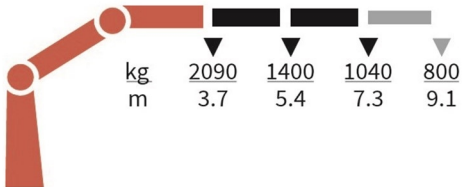
Lifting Capacity



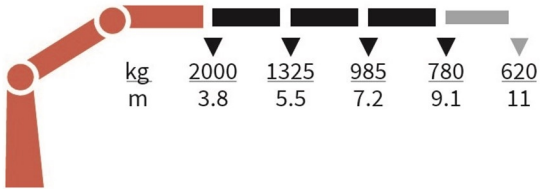
910-K1-RCS



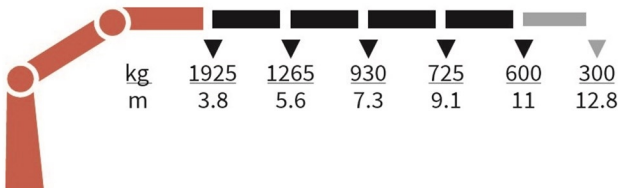
910-K2-RCS



910-K3-RCS



910-K4-RCS



Basics

HMF 910K-RCS

Electronic speed adaptation system, HDL-d/HD5
Progressive crane control - PCC
Priority flow control - PFC
Single power plus link arm system
Proportional control valve PVG 32
Internal hose routing
Environmentally friendly quality coating - EQC
RCL safety system

Options

Control systems
Radio remote control Maxi - RC-MAX
Radio remote control Mini - RC-MIN
Electrical options
Spotlight
Voltage
Extra valves
Extra valves in hose guides
Extra valves in hose reels, internally led
Hydraulic hoist
Hydraulic hoist 1000
Hydraulics
Ball valve for tank
Oil cooler, small
2 manually controlled available stabilizer functions
Biodegradable oil
Oil tank 50 l mounted on the crane
Radio remote control of stabilizer beams and stabilizer legs on crane
Mechanical options
Manual extension
Hook for manual extension
Crane orientation
Mounting bolt kit
Fittings for mounting bolt kits
Mechanical slew limitation
Stability and safety
Electronic vehicle stability - EVS
Cylinder limitation - CYL
Cylinder and beam limitation - CYBEL
2-section Cylinder and beam limitation - 2CYBEL
2-stage load moment limitation
Preparation for alternative stability system
Stabilizer duty control
Alarm flash on stabilizer legs
Calibration bypass - CBS
Light tower
Temperature monitoring
Beam and height warning - BEHEW
Stabilizer leg warning
Stabilizer beams and legs
Manual swing-up stabilizer legs with gas spring
Manual swing-up stabilizer legs

Fixed vertical stabilizer legs
Fixed vertical stabilizer legs, long
Footplate with ball joint
Footplate extended
Manual stabilizer beams 3.4 m - 5.2 m
Manual swing-up stabilizer legs, long
Hydraulic stabilizer beams 4.4 m - 5.2 m
Colours
RAL colors