



POWER TO LIFT

HMF 4020K-RCS

The HMF 4020K-RCS has a low tare weight and reduced space requirements giving optimum vehicle payload.



Main benefits

- Extensive range of peripheral options available i.e. fly-jib or grab.
- Strength and operational safety
- Great flexibility and smooth operation for demanding tasks

All-round crane for heavy lifting tasks

The HMF 4020K-RCS is a radio remote controlled and versatile crane with many options that can be personalised to fit your exact crane needs.

The crane has a low tare weight and reduced space requirements which provide for maximum use of the truck body as well as savings on fuel.

Additionally, the crane can be delivered with HMF's load-dependent EVS system monitoring and ensuring stability.

The crane is furthermore designed to be service-friendly and equipped with internal hose routing, which makes it easy to maintain, and protects the crane against wear and tear. All this to ensure a low cost of ownership.

PERFORMANCE	4020-K2	4020-K3	4020-K4	4020-K5	4020-K6	4020-K7	4020-K8
Load Moment (tm)	38	37	35,9	34,9	34,7	33,9	33,7
Hydraulic reach (m)	8,1	10,1	12,2	14,35	16,6	18,95	21,3
Weight excl. stabilizers (Kg)	3150	3410	3660	3900	4080	4240	4400
Weight of stabilizers, standard (Kg)	470	470	470	470	470	470	470
Lift-to-weight ratio	10,5	9,5	8,7	8	7,6	7,2	6,9
Slewing Angle (°)	∞	∞	∞	∞	∞	∞	∞
Slewing torque (kgm)	4000	4000	4000	4000	4000	4000	4000
Working pressure (bar)	365	365	365	365	365	365	365
GEOMETRY							
Height above mounting surface (mm)	2384	2384	2384	2384	2384	2384	2384
Width, folded, standard (mm)	2518	2518	2518	2518	2518	2518	2518
Length of crane, no extra valves (mm)	1148	1148	1148	1148	1148	1274	1274

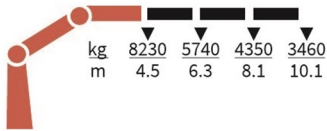
Lifting Capacity



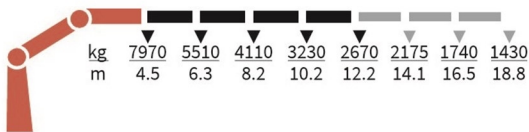
4020-K2-RCS



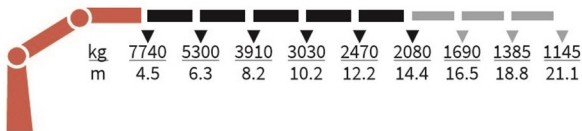
4020-K3-RCS



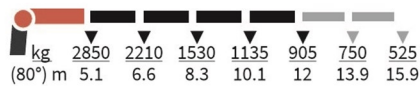
4020-K4-RCS



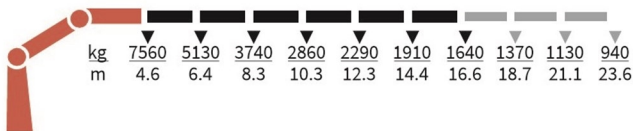
4020-K5-RCS



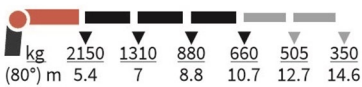
FJ1000-K4



4020-K6-RCS



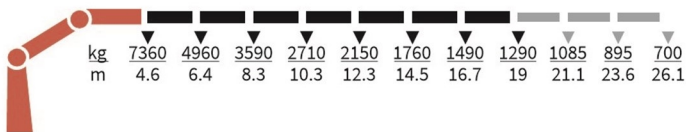
FJ600-K3



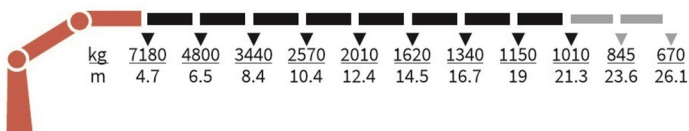
FJ600-K4



4020-K7-RCS



4020-K8-RCS



Basics

HMF 4020K-RCS

Electronic speed adaptation system, HDL-d/HD5
Progressive crane control - PCC
Priority flow control - PFC
Dual power plus link arm system
Proportional control valve PVG 32
Radio remote control of stabilizer beams and stabilizer legs on crane
Internal hose routing
Environmentally friendly quality coating - EQC
RCL safety system

Options

Control stations
Personnel basket on crane – MEWP
Control systems
Radio remote control Maxi - RC-MAX
Radio remote control Mini - RC-MIN
Electrical options
Spotlight
Voltage
Extra valves
2 extra valves
Extra valves in hose guides
Extra valves in hose reels, internally led
Extra valves in hose reels, externally led
Multi-coupling
Fly-jib
Fly-jib 600
Fly-jib 1000
Personnel basket on Fly-jib – MEWP-FJ
Hydraulic hoist
Hydraulic hoist 3200
2-part snatch block
Hydraulics
Ball valve for tank
Oil cooler, medium
Oil cooler, large
1 radio remote controlled available proportional function
3rd extra valve
Hose kit for 1 extra valve led to the jib
Biodegradable oil
Mechanical options
Manual extension
Shielding of load-holding valve
Protective guard at the rear of the jib
Mounting bolt kit
Fittings for mounting bolt kits
Stability and safety
Electronic vehicle stability - EVS
Cylinder limitation - CYL
2-section Cylinder and beam limitation - 2CYBEL
2-stage load moment limitation

Preparation for alternative stability system
Alarm flash on stabilizer legs
Calibration bypass - CBS
Light tower
Temperature monitoring
Beam and height warning - BEHEW
Stabilizer leg warning
Stabilizer beams and legs
Hydraulic swing-up stabilizer legs
Manual swing-up stabilizer legs
Fixed vertical stabilizer legs
Footplate with ball joint
Footplate extended
Hydraulic stabilizer beams 5.6 m - 7.8 m
Colours
RAL colors