



POWER TO LIFT

# HMF 270K-RC

The HMF 270K-RC is a reliable and sturdy crane ideal for smaller vehicles.



## Improved payload for maximal capacity

The HMF 270K-RC is a compact knuckle boom crane with a reliable and sturdy design. The crane is suitable for many different purposes and is available with two or three hydraulic extensions for extra-long reach.

The crane is designed for great manoeuvrability and is fast and easy to operate. It is furthermore designed with a low tare weight, which secures an improved payload on the truck body.

When stowed during transport, the crane can be folded up to a width of only 1.7 m making it possible to mount it on small vehicles. This crane is also available with a width of 2.0 m in order to suit most vehicles.

### Main benefits

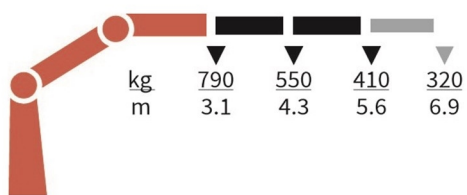
- Very compact design
- Radio remote control system for total freedom
- Long lifespan

PERFORMANCE	270-K2	270-K3
Load Moment (tm)	2,5	2,4
Hydraulic reach (m)	5,64	6,99
Weight excl. stabilizers (Kg)	386	421
Weight of stabilizers, standard (Kg)	59	59
Lift-to-weight ratio	5,6	5
Slewing Angle (°)	370	370
Slewing torque (kgm)	390	390
Working pressure (bar)	240	240
GEOMETRY		
Height above mounting surface (mm)	1527	1527
Width, folded, standard (mm)	1700	1700
Length of crane, no extra valves (mm)	538	564

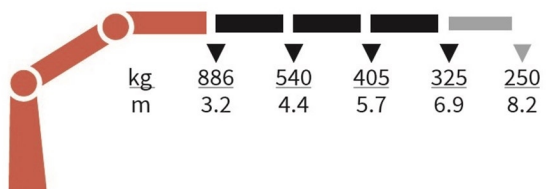
# Lifting Capacity



270-K2-RC



270-K3-RC



## Basics

HMF 270K-RC

RCL safety system
-------------------

Environmentally friendly quality coating - EQC
--

## Options

### Control systems

Radio remote control Mini - RC-MIN
------------------------------------

### Electrical options

Spotlight
-----------

Voltage
---------

### Extra valves

2 extra valves
----------------

Extra valves in hose guides
-----------------------------

### Hydraulics

Biodegradable oil
-------------------

High-pressure filter
----------------------

Oil tank 20 l mounted on the crane
------------------------------------

### Mechanical options

Manual extension
------------------

Crane orientation
-------------------

Mounting bolt kit
-------------------

Mechanical slew limitation
----------------------------

Crane width
-------------

### Stability and safety

Alarm flash on stabilizer legs
--------------------------------

Beam and height warning - BEHEW
---------------------------------

Safety system for cranes without CE equipment incl. spirit level
--

Load-holding valve on slewing
-------------------------------

CE Safety system for crane with radio remote control
--

### Colours

RAL colors
------------